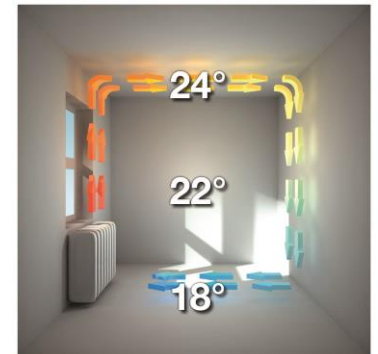
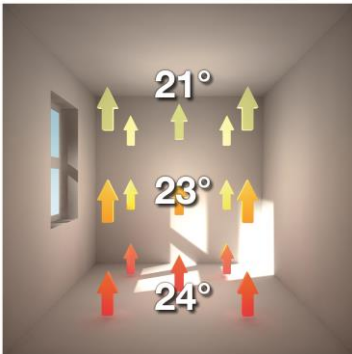


Presentation

Heating cables
Electrical underfloor heating, frost
protection & snow and ice melting



About us.....



We are a privately owned company established in 2002 - with head office and factory located in Middelfart, Denmark.

The company is a limited liability company owned by 3 norwegian partners – of which 2 are members of the board – however not involved in the daily business.

Our priority markets are the Nordic countries and UK – however we do have exports to most parts of the EU – and even so far away as China.



Why Heatcom ?

- We have experience with heating cables of more than 5.000.000 m2 in operation
- System approvals filed with Semko and BEAB
- Complete program of heat mats, heating cables, self limiting cables and thermostats including easy installation accessories. As well as frost guards, winter mats and freeze protection.
- Premium quality – very competitive pricing
- Short delivery times - flexible production
- Private label is an option that we can offer you
- We offer good profitability for our distribution
- Enjoy full 15 years warranty on floorheating cables with Heatcom



Heatcoms product are in top with the quality of the cables. We take no chances with the quality of our products when they are to be placed under a permanent base - as below at Cluj football stadium in Romania, luxury apartments in City Star Tower, Hangzhou in China, on Englands most famous exhibition center or in family Jönssons private residence



Cluj Stadium In Romania

Champion League Participant – heating cables under the grass makes the football roll the whole year

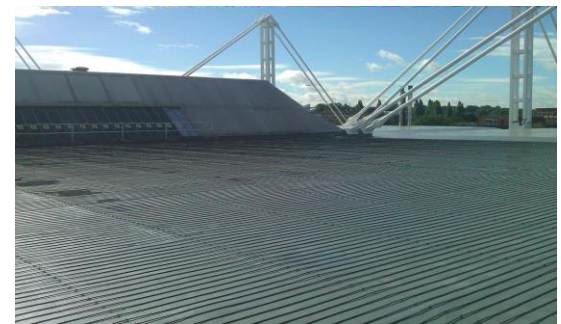
42.000 m cables
6,0 mm - 20W/m



City Star Hangzhou, China

Floor heating in luxury apartments in City Star – the pride of the city

250.000 m cables
5,5 mm - 20W/m



NEC Birmingham, UK

Automated snow- and ice melting to prevent roof on exhibition center to collapse.

10.000 m cables
7,0 mm - 20W/m



Product collage



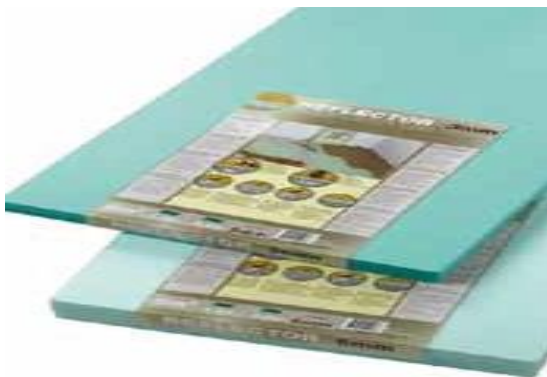
Heating mats – the simplest solution
4 ranges: 100W, 120W, 150W & 190W



Cable Kits – the most flexible solution
Ø3 mm or 5mm in combination with various thermostats



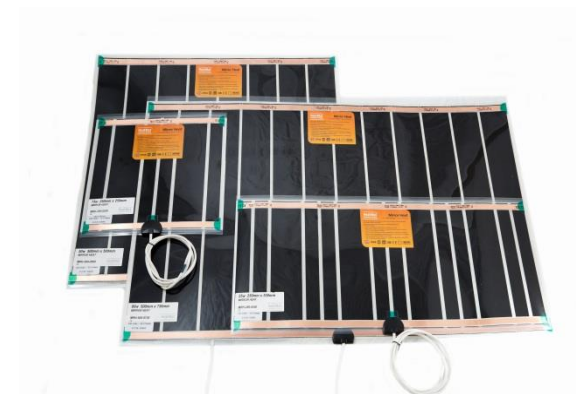
Alumat - the special solution for parkett-, laminate and wooden floors
2 ranges: 80W & 140W



Reflector plates – for insulation and step noise reduction in 3 mm & 6 mm
Also deliverable in density 50kg/m³



Our thermostats – 4 types including a new type for wood, parquet and laminate - manual w. temperature limiting switch



Mirror heating – for demisting mirrors
6 sizes and effects from 15W – 100W
Can also be customized to order

Other heating cables



3 mm Kabel 12 W/m



5 mm cable 14 W/m



6,0mm Strong cable in 4 sizes:
10W, 14W, 18W & /20W



7 mm cable 20W, 25W & 30 W/m



Concrete hardening cable 40W/m –
11 sizes from 20m – 105m



2 Series of selflimiting cables - many types – from 12 – 28 W/m

- 1) Constructions - economy
- 2) Industrial & high temperature – premium



FROST SAFE PLUS – 11W self-limiting cable with build in thermostat for external frost protection

Frost Safe Plus is designed for external frost protection of pipes, water lines, valves, drainage, sprinkler systems and the like

The product is built around a self-limiting heating cable 11W/m with attached cold lead and thermostat - ready to connect to 230V socket outlets.

The built-in thermostat is used exclusively as an on / off function. It does not control the temperature of the cable, that is precisely the self-limiting cables characteristic.

The thermostat ensures that the cable is switched on when the temperature falls below 3 degrees C - and when the outside temperature again is above 13 degrees C the cable is turned off. This means that the cable will not be using standby power throughout the warmer seasons of the year.

FrostSafe provides a power of 11 W / m at 5 degrees C.

The installation is completed with an exterior insulation for instance a pipe bowl.

TECHNICAL DATA

Voltage	230 V ~ 50 Hz
Cable Diameter	8,0 x 5,0mm
Insulation inner Sheath	Yes
Authorisation	CE
Cable Buildup	Self-Limiting Heating Cable
Ground shield	Aluminium Foil
Outer Sheath	TPE Overjacket
Max. temp. on Cable	65°C / 65°C
Min. bend radius	35mm
Warranty	3 years
Surrounding pressure	Max. 4bar
Cable installation temperatur	Min. 5°C
Min. installation temperatur	-30°C
Tolerance	-3°C/+13°C



Discription	Effect watt	Power
FrostSafe-Plus Selflim. 11W/m 1.4m Schuko plug	15W@5°C	0,1 A
FrostSafe-Plus Selflim. 11W/m 2.0m Schuko plug	22W@5°C	0,1 A
FrostSafe-Plus Selflim. 11W/m 3.0m Schuko plug	33W@5°C	0,1 A
FrostSafe-Plus Selflim. 11W/m 4.0m Schuko plug	44W@5°C	0,2 A
FrostSafe-Plus Selflim. 11W/m 6.0m Schuko plug	66W@5°C	0,3 A
FrostSafe-Plus Selflim. 11W/m 8.0m Schuko plug	88W@5°C	0,4 A
FrostSafe-Plus Selflim. 11W/m 10.0m Schuko plug	110W@5°C	0,5 A
FrostSafe-Plus Selflim. 11W/m 12.0m Schuko plug	132W@5°C	0,6 A
FrostSafe-Plus Selflim. 11W/m 14.0m Schuko plug	154W@5°C	0,7 A
FrostSafe-Plus Selflim. 11W/m 16.0m Schuko plug	176W@5°C	0,8 A
FrostSafe-Plus Selflim. 11W/m 19.0m Schuko plug	209W@5°C	0,9 A
FrostSafe-Plus Selflim. 11W/m 22.0m Schuko plug	242W@5°C	1,1 A
FrostSafe-Plus Selflim. 11W/m 25.0m Schuko plug	275W@5°C	1,2 A
FrostSafe-Plus Selflim. 11W/m 28.0m Schuko plug	308W@5°C	1,3 A
FrostSafe-Plus Selflim. 11W/m 40.0m Schuko plug	440W@5°C	1,9 A
FrostSafe-Plus Selflim. 11W/m 45.0m Schuko plug	495W@5°C	2,2 A
FrostSafe-Plus Selflim. 11W/m 49.0m Schuko plug	539W@5°C	2,3 A
FrostSafe-Plus Selflim. 11W/m 50.0m Schuko plug	550W@5°C	2,4 A

PIPE GUARD PLUS – 11W self-limiting cable with build in thermostat for internal frost protection

Frost Safe Plus is designed for internal frost protection of pipes, water lines, valves, drainage, sprinkler systems and the like.

Approved for drinking water.

The product is built around a self-limiting heating cable 11W/m with attached cold lead and thermostat - ready to connect to 230V socket outlets. The built-in thermostat is used exclusively as an on / off function. It does not control the temperature of the cable, that is precisely the self-limiting cables characteristic.

The thermostat ensures that the cable is switched on when the temperature falls below 3 degrees C - and when the outside temperature again is above 13 degrees C the cable is turned off. This means that the cable will not be using standby power throughout the warmer seasons of the year.

Frost Safe provides a power of 11 W / m at 5 degrees C.

TECHNICAL DATA

Voltage	230 V – 50 Hz
Cable Diameter	8,0 x 5,0mm
Insulation inner Sheath	Yes
Authorisation	CE
Cable Buildup	Selflimiting Heating Cable
Ground shield	Alu. Foil
Outer Sheath	Adflex
Max. temp. on Cable	65°C / 65°C
Min. bend radius	35mm
Warranty	3 years
Surrounding pressure	Max. 4bar
Cable installation temperatur	Min. 5°C
Min. installation temperatur	-30°C

Description	Effect Watt	Power
Plug In Plus selflimiting cable 11W/m 1,4 m Schuko plug	15W at 5C	0,1A
Plug In Plus selflimiting cable 11W/m 2,0 m Schuko plug	22Wat 5C	0,1A
Plug In Plus selflimiting cable 11W/m 3,0 m Schuko plug	33W at 5C	0,1A
Plug In Plus selflimiting cable 11W/m 4,0 m Schuko plug	44W at 5C	0,2A
Plug In Plus selflimiting cable 11W/m 6,0 m Schuko plug	66W at 5C	0,3A
Plug In Plus selflimiting cable 11W/m 8,0 m Schuko plug	88W at 5C	0,4A
Plug In Plus selflimiting cable 11W/m 10,0 m Schuko plug	110W at 5C	0,5A
Plug In Plus selflimiting cable 11W/m 12,0 m Schuko plug	132W at 5C	0,6A
Plug In Plus selflimiting cable 11W/m 14,0 m Schuko plug	154W at 5C	0,7A
Plug In Plus selflimiting cable 11W/m 16,0 m Schuko plug	176W at 5C	0,8A
Plug In Plus selflimiting cable 11W/m 19,0 m Schuko plug	209W at 5C	0,9A
Plug In Plus selflimiting cable 11W/m 22,0 m Schuko plug	242Wat 5C	1,1A
Plug In Plus selflimiting cable 11W/m 25,0 m Schuko plug	275W at 5C	1,2A
Plug In Plus selflimiting cable 11W/m 28,0 m Schuko plug	308W at 5C	1,3A
Plug In Plus selflimiting cable 11W/m 35,0 m Schuko plug	385W at 5C	1,7A
Plug In Plus selflimiting cable 11W/m 40,0 m Schuko plug	440Wat 5C	1,9A
Plug In Plus selflimiting cable 11W/m 45,0 m Schuko plug	495W at 5C	2,2A
Plug In Plus selflimiting cable 11W/m 50,0 m Schuko plug	550W at 5C	2,4A



Approved for drinking water



Plug-and-Play solutions for gutter heating



23 W selflimiting cable with build in thermostat: *on 5C/off 15C*
Comes in sizes from 5 m up to 50 m - 2 m cold cable lead
with Schuko plug. A price worths and easy installation solution
with build in energy efficiency.



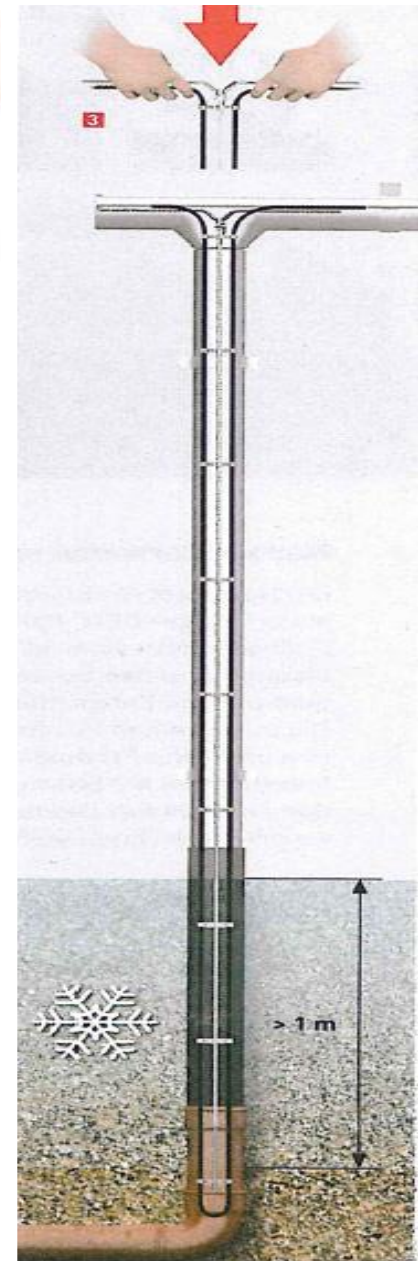
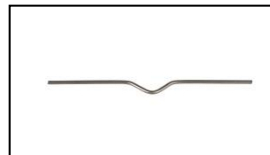
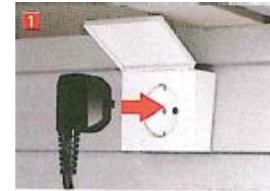
It cannot be any easier...

Cut to fixed lengths from factory
100% ready for installation on site:

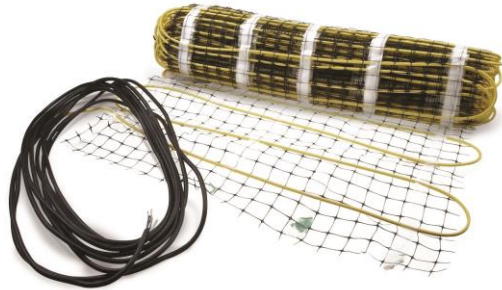
- Roll out
- Plug-in

It is as simple as that....

Lengths	Effect
6 m	138W
8 m	184W
10 m	230W
12 m	276W
14 m	322W
16 m	368W
19 m	437W
22 m	506W
25 m	575W
28 m	644W
32 m	736W
35 m	805W
40 m	920W
45 m	1025W
50 m	1150W
60 m	1380W



Snow melting mats 300W/m²



Outdoor winter mats 300 W/m²

Robust 7 mm cable – 10 m cold lead

W:40 cm from 720W – 3360W 2,4m² up to 11,2m²

W:80 cm from 2400W – 4320 8,0m² up to 14,4m²

**Also available for installation in hot Asphalt
170-240 degrees C for up to 10 minutes**



Thermostats & sensors
Many variations for outdoor
applications



Ice and snow melting for roofs and gutters



FRO-GUT-CHA/FRO-GUT-BEAM



FRO-GUT-GUID



FRO-GUT-SENS



7 mm cable 25W or 30 W/m

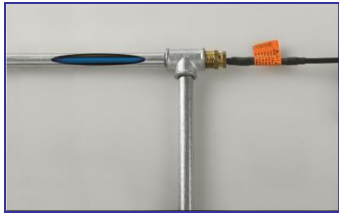


A complete range of heating cables, thermostats and fitting accessories to provide **fully automated** protection against dangerous ice and snow buildup on roofs and in gutters

Saves up to 50% on normal running costs by using a moisture sensor – which prevents the system activating unless there is a moisture present



Frost protection & Snow melting



Plug-in

"Plug-and-Play" self limiting cables – approved for installation inside water pipes for drinking water 11 Watt/lm - with schuko plug - sizes up to 60 m. Can also be installed directly on the water pipe.



Frost Safe Plus -

Also available in a version with built-in thermostat which turns on / off at +3 / +13 C
Lengths from 1.4 to 60 m



Frost Safe

"Plug-and-Play" 13W heating cable with schuko plug and built-in thermostat for frost protection of water pipes or condensate pipes. Connects automatically at 3C and cut off at 13C
13 Watt/lm – 10 sizes from 2 m– 45 m

Concrete hardening cable 40W/m

– 11 sizes from 20m – 105m

Outdoor winter mats 300 W/m2

W:40 cm from 720W – 2400W

W:80 cm from 2400W – 4320



Thermostats & sensors
Many variations for outdoor applications



Heating Wrap - frost protection for your pipes. A removable selflimiting heating cable 17W/m laid in an insulating wrap with velcro closure

Frost protection of pipes and drains on construction sites – for larger dimensions of tubes, drains etc. combine 2 with the velcro closure.

Used for temporary installations for sheds, mobile bathroom carts and similar. This is even a good product for winter camping – camping sites and trailer parks that are open all year.

Lengths	Effect
3 m	51W
6 m	102W
9 m	153W
12 m	204W
15 m	255W
18 m	306W
21 m	357W
24 m	408W
27 m	459W



**The heating wrap is very robust
having a long life time and can be
used year after year...thereby it is
also very suitable for rental**



Heatcom – mobile winter mats



Applications:

- Thawing approx 20-50 cm per day
- Defrost before digging
- Heating of casting molds
- Frostprotection of sand for brick laying
- Heating of cable drums
- Thawing of local frost – example front doors and entrances
- Heating of machines/cars for easy winter start
- Thawing of silage bales
- Narrow model for ditches and laterals

- Durable and fire retardant PVC coated nylon fiber web heating mat - IP57
- 20 mm insulation
- Ø 7mm robust heating cable
- Cover of alu foil
- 8 eyelets for hanging vertically
- Suspensions belts for transport and storage
- Choose between 3-polet CEE plug or Schuko
- 2,5 m rubber connection cable ("Cold lead") – 230V
- 2 qualities Premium or Light
- Sizes 3,0 x 1,0 m /effect 850W
- Alternativtely 6,0 x 0,8 m/ effect 1400W



Selflimiting heating cables new eHeat Serie

eHeat series has been developed specifically for frost protection tasks:

As frost protection of pipes, water pipes, gutters and roofs and the like.

The screen is aluminum foil and outer casing is a new type of TPE

Aluminum Foil is very installation friendly and much faster to terminate than tinned copper braid.

This means that HEATCOM antifreeze program is very attractive in pricing - compared to the "heavier" industrial self-limiting cables, which we also have in the program however for more industrial and specific purposes.

There are 9 types of cables in this series:

eHeat Water 11 W approved for interior use in water pipes

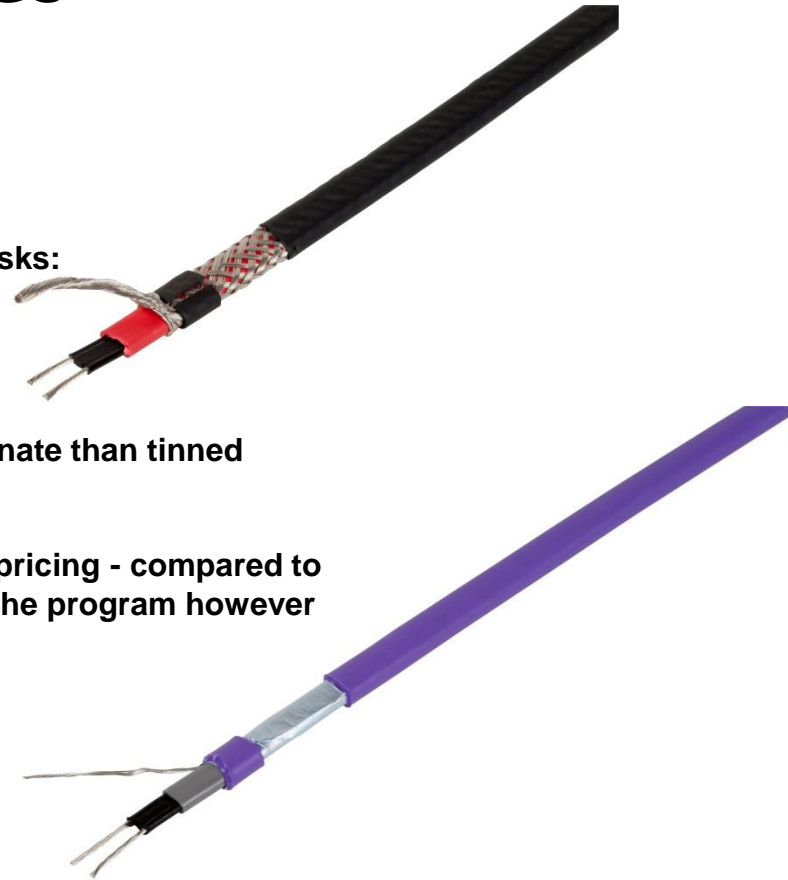
eHeat Micro 11 W for exterior use on small pipes, etc.

eHeat Micro 17 W for exterior use on small pipes, etc. -

eHeat Guys 23 W for use in gutters, downspouts, roofs etc.

eHeat Snow 50 W for snow and ice melting in concrete, ramps, etc.

eHeat Pipe 10 W – 16 W – 25 W – 30 W can withstand temperatures up to 85 degrees C



P.O.S – we make it easy for the end user to decide

Den fleksible løsning

Heatcom Cable Kit anbefales til rom som ikke er rektangulære og hvor faste innredninger gjør det vanskeligere og legge en varme matte.

Heatcom 3 mm varmekabel leveres komplett i pakning med 2 typer tape, flexrør og en digital termoster med rom og gulvvaler.



ELEKTRISK IMPORT AS **HEATCOM**

Den enkleste løsning

Heatcom varmematte passer perfekt til rektangulære rom. Beregne slik at ca. 80% av gulvets totalflate blir dekket med gulvvarme. Varmekabelen er tilpasset med riktig cc avstand på varmematten.

Velg mellom 100w og 150wpr²! Bredden på maten er alltid 0,5 m og bygger kun 2 mm.



ELEKTRISK IMPORT AS **HEATCOM**

Den spesielle løsning

Heatcom AluMater er spesiell utviklet varmematte til tre-, parkett- og laminat gulv, som kun bygger 2 mm. Den er meget enkel og legge, gulvet kan monteres direkte ovenpå maten.

AluMat legges på Heatcom 3 mm refleksplate som øker isoleringsverdiene og reduserer trinnyllet vesentlig. Maten gir jevn varme til gulvet.



ELEKTRISK IMPORT AS **HEATCOM**

Elektrisk gulvvarme – den beste varmen kommer fra gulvet

Hvorfor gulvvarme?

- Er du varm på føttene – blir du varm i hele kroppen.
- Kroppen er faktisk laget slik, når du ikke trykker på føttene kan kroppstemperaturen senkes med 2-3 grader uten at det merkes.

Fordeler med elektrisk gulvvarme

- Kan legges rett på eksisterende gulv.
- Perfekt til renovering og tilbygg.
- Bigger kun 3-5 mm.
- Enkelt og installere.
- Jevn varmefordeling.
- Vedvarende drift.
- 10 år 15 års garanti.

Gulvvarme på en enkel måte

- Heatcom gulvvarme legges opp med 3 mm isolertappe og 2 mm gulvvarmestruktur i tillegg.
- Varmekabel til gulvflor bygger fra 3 mm plusse avhengig av.
- Sammen med en digital termoster, dag/ natttemperering som gulvvaler, gjør at det spares på strømregningen.




ELEKTRISK IMPORT AS **HEATCOM**

Gi dine møbler mer plass

Ved bruk av varmekabel til oppvarming, blir det sannsynligvis den mest effektive oppvarming av et rom. I tillegg er det uynlig!

Varmen fordeles over hele gulvflaten og innemået forbedres vesentlig.




ELEKTRISK IMPORT AS **HEATCOM**



Posters, brochures quick reference guide, floor splash, displays, informativ packaging etc




P.O.S – we make it easy for the end user to decide

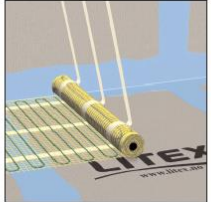


HEATCOM.

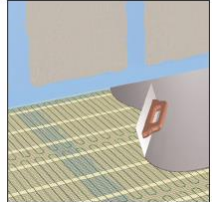
lavbyggende gulvvarme - enklere enn du tror..!

HEATCOM lavbyggende gulvvarme kan legges over eksisterende gulv og på alle typer underlag og bygger ikke mer enn 3mm.

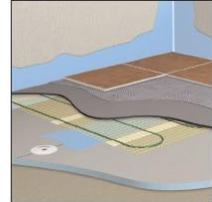




1. Tipset varmekabelen etter rommets utforming og tilsvarende 80% av rommets (m²).
Legg ikke varmekabel under fast innredning som skap, bukskur og lignende.
Når kabelen er tilpasset monteres den til underlaget med dobbeltsidig tape og i henhold til anvisning.
Føler-rør og gulvfeiler til termostatt, plasseres mellom varmekabelen. Les monteringsanvisning.



2. Varmekabelen tildekkes deretter med egnert avretningsmasse.
For våtrom kan varmekabelen legges direkte på en membranplate og tildekkes deretter med avretningsmasse. Våtroms normen må følges.
Husk og prima, slik varmekabelen får godt feste til underlaget.



3. Varmekabel kan legges på brennbart underlag om den tildekkes med avretningsmasse.
Det er viktig at det benyttes avretningsmasse som er tilpasset varmekabel. Følg avretningsmasse leverandørens anbefalinger.

CE BEAB Approved

15 YEARS WARRANTY HEATCOM

TIPS

- System Cable Mat anbefales for rektangulære rom.
- System Cable Kit er den fleksible løsningen til rommet hvor det er vanskelig å legge en matte på grunn av faste innredninger eller om man ønsket variabel varme soner i rommet.

Gulvvarme og termostatt må tilkobles av installatør.

15 års garanti.

ELEKTRISK IMPORT AS ei.no

HEATCOM.
Floor Heating - Comfort for Generations

System Cable Kit • System Cable Mat • System Cable Kit • System Cable Mat • System Cable Kit • System Cable Mat

Posters...how to install.....



HEATCOM

Lavbyggende gulvvarme - enklere enn du tror!

Alumat 2 mm gulvvarme matte. For tre, parkett og laminatgulv. Plasseres direkte under gulvet uten innstøping.





1. Alumat varmematte legges direkte på Heatscom reflektorplater 3 eller 6mm, eller lignende produkt. For å sikre at Alumat og reflektorplater ligger stabilt under monteringen, kan den pærløst fests med dobbeltsidig tape. Reflektorplaten kan også holdes med vanligt gulvlim. (Ikke inkludert i pakken)



2. Alumat tilpasses rommet med og klyppe og vende varmematten. Varmematten rulles ut til andre siden av rommet/veggen (Ikke-ikke-kurtz kobling). Deretter vendes varmematten 180 gr og null ut varmematten tilbake, side om side med den første Alumat baren. Hvis mulig, bør man starte og legge ut varmekabelen slik at den svarer kalde kableten kommer opp mot veggen så nær der man ønsker å montere Termostaten. Gulvfeilen monteres mellom varmekabelene ca. 50 cm ut fra veggen.



3. Løse varmematten til hverandre i kant, ved hjelp av aluminium tape som følger med i pakken. Etter at varmematten er klippet og vendt 180 gr brukes spesialtappen for og videreføres jordingen mellom de utvalgte varmemattene. Hvis ikke bruk annen tape enn den kraftige aluminiums tapen som medfølger! Etter at varmematten dreies 180° bruk noen tapelister over de to tynne varmekabelene som forbinde varmemattene til hverandre.



4. Når varmemattene ligger stabilt på gulvet, legg ut parkett eller laminat direkte på toppen av Alumat. Vær oppmerksom på at noen av gulvproduktene krever at det legges fuktspærre/platefolie på gulvvarmen og før du legger ut parkett eller laminatgulv. Er undergulvet i betong skal det alltid brukes fuktspærre gjennom hele på betongen før reflektorplater og gulvvarme. Følg også monteringsanvisningen til gulvproduktene. Bruk termostatt med gulvfeiler og temperatur begrensning, maks 27 grader - faks, Heatcom HC 10. Kan kun installeres av registrert installatør.

CE S

MADE IN DENMARK

- Glassfiberarmert, 2 mm aluminiumsfolie
- 80W/m velegnet til parkett- og laminatgulv
- Fås i størrelser 1m2 - 15m2
- Alumat tilkobles en termostatt med temperaturbegrensning maks 27 gr. C
- Aluminiums overflaten fordeler varmen optimalt
- Alumat ligger helt plant når maten rulles ut
- Alumat er kun 2 mm tykk
- 10 års garanti

ELEKTRISK IMPORT AS ei.no

HEATCOM
Floor Heating - Comfort for Generations

Alumat gulvvarme matte • Alumat gulvvarme matte • Alumat gulvvarme matte • Alumat gulvvarme matte • Alumat gulvvarme matte



ELEKTRISK IMPORT AS

UNNGÅ FROSTSKADER

Unngå frostskafer på installasjoner og bygninger forårsaket av is og snesamlinger i takrenner og nedløpsrør. Forsbygg samtidig skader forårsaket av istapper som faller.

GUTTER SAFE PLUG-AND-PLAY LØSNING

- Løsningen er billig å kjøpe
- Den er fleksibel og enkel å montere
- Kan lett endres etter behov
- Ikke noe behov for elektriker
- Enkel å fjerne når vinteren er over

FAKTA OM PRODUKTET

- Robust 7mm varmekabel
- Effekt på kabelen er 25W / m
- Termostaten slår ved 5° C
- Termostaten slås av ved 15° C
- 2 m tilkoblingskabel
- Schuko plugg inn i 230 V jordet vegguttak
- 9 standard størrelser opp til 50m/1250W

GUTTER SAFE FROSTSIKRING
av takrenner og nedløpsrør

Heatcom plug-and-play varmekabel med innebygget termostatt

NYHETER!



HEATCOM
Floor Heating - Comfort for Generations

ei.no

Roll up

HEATCOM[®] Gulvvarme - Frostsikring - Varmekabler

Hjem ▼ Profil ▼ Produkter ▼ Downloads FAQ ▼ Kontakt ▼ Login Xtra-net Sitemap

Fryser dine rør og tagrender? ...
- Frost Safe forhindrer at dine rør og tagrender fryser til.

Heatcoms elektriske gulvvarme produkter forhandles og distribueres af adskillige partnere rundt om i Skandinavien, Europa og andre dele af verden.

Hjem

ANVENDELSES OMRÅDER

- Gulvvarme
- Frostsikring af tagrender
- Frostsikring af rør
- Is og snesmeltning
- Industri
- ATEX (EX)
- Selvbegrænsende
- Betonhærdning
- Spejlvarme
- Termostater
- Tilbehør

HEATCOM CORPORATION AS

RÅD & DÅD

- Om gulvvarme
- Fordele ved gulvvarme
- Tagrender
- Rør og kondensaføb
- Is og snesmeltning info
- Garanti
- Dansk kvalitet
- Netværk
- Beregninger

REFERENCER

Hangzhou centrum
The City Star Shanghai

Prestige projekt med
luksuslejligheder.
[Læs mere](#)

Floor Heating
System Cable Kit

- Heatcom er en dansk producent der udvikler og markedsfører varmekabler og termostater, som er maksimalt tilpasset hinanden.
- Vi har erfaring fra mere end 20 år i branchen og har leveret mere end 6.000.000 m² varmematte.
- Vi fremstiller produkter med godkendelse af Semko, BEAB og CE.

Heatcom's new homepage

www.heatcom.dk

Full overview of our product range
and technical data



Managing Director
Bjarne Steffen Jørgensen

**Technical
Manager**
Søren Bærholm



**Purchasing- and
Logistics Manager**
Flemming Madsen

